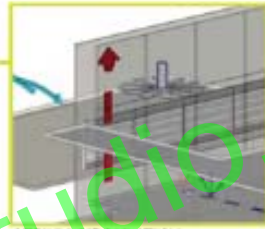


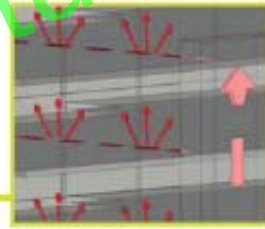
WINTER HEATING SYSTEM



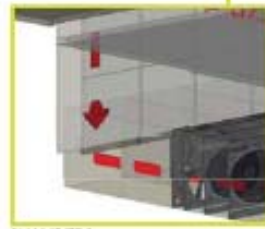
BIG ASS FANS TO HELP CIRCULATION



ATRIUM CIRCULATION



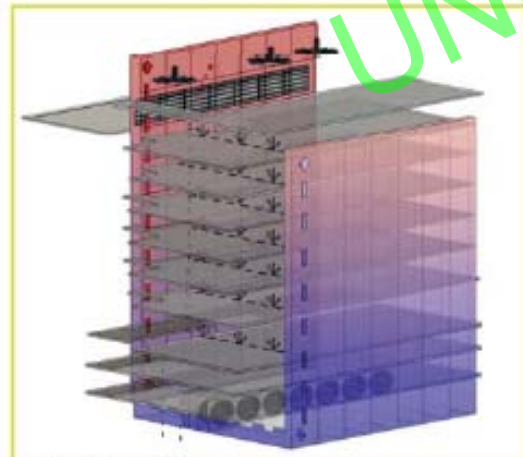
RAISED FLOORING



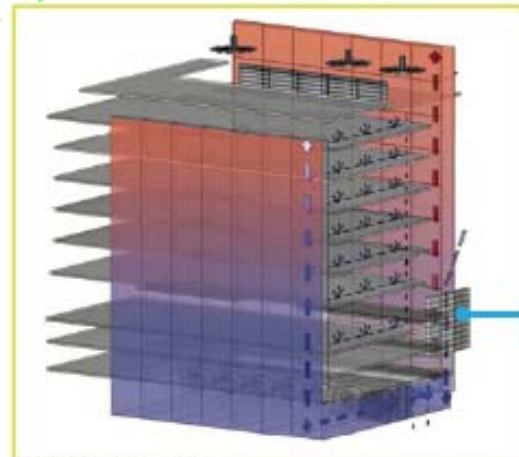
CHAMBERS



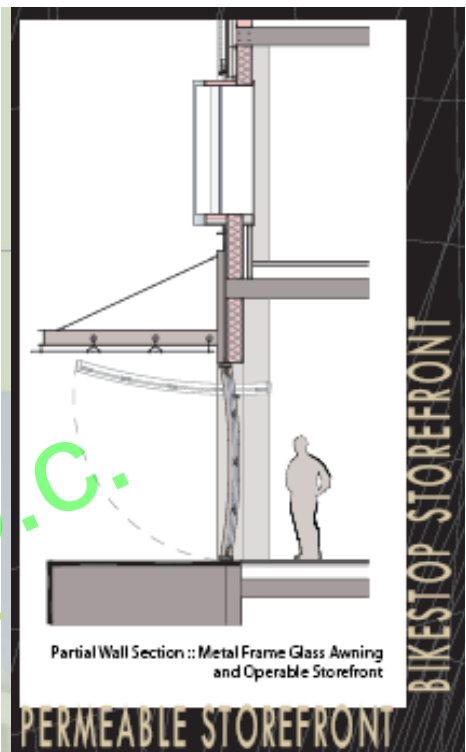
LIVING WALL



SUMMER COOLING SYSTEM

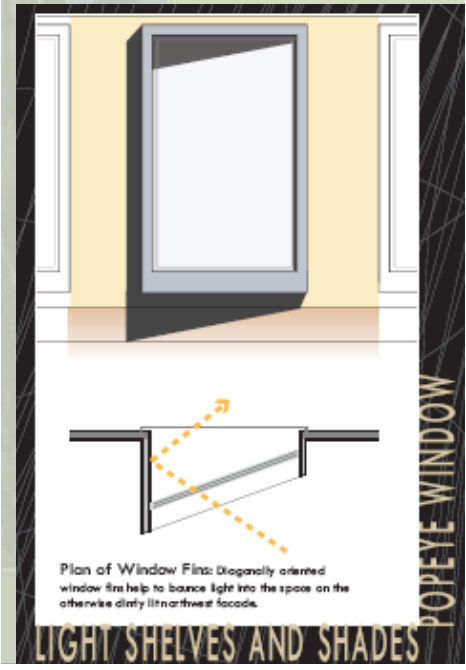


ALLEY COOLING SYSTEM



Partial Wall Section :: Metal Frame Glass Awning and Operable Storefront

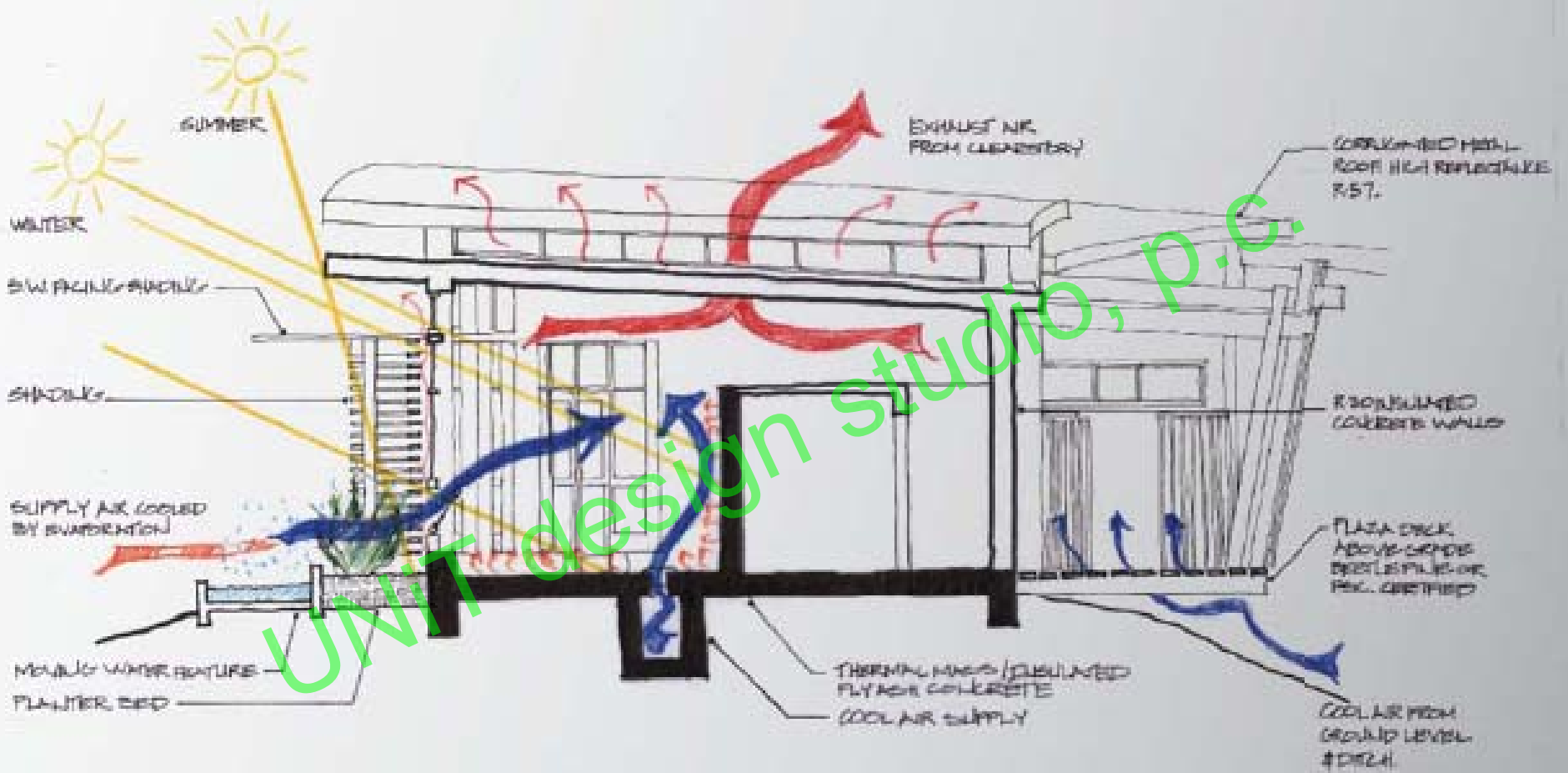
PERMEABLE STOREFRONT



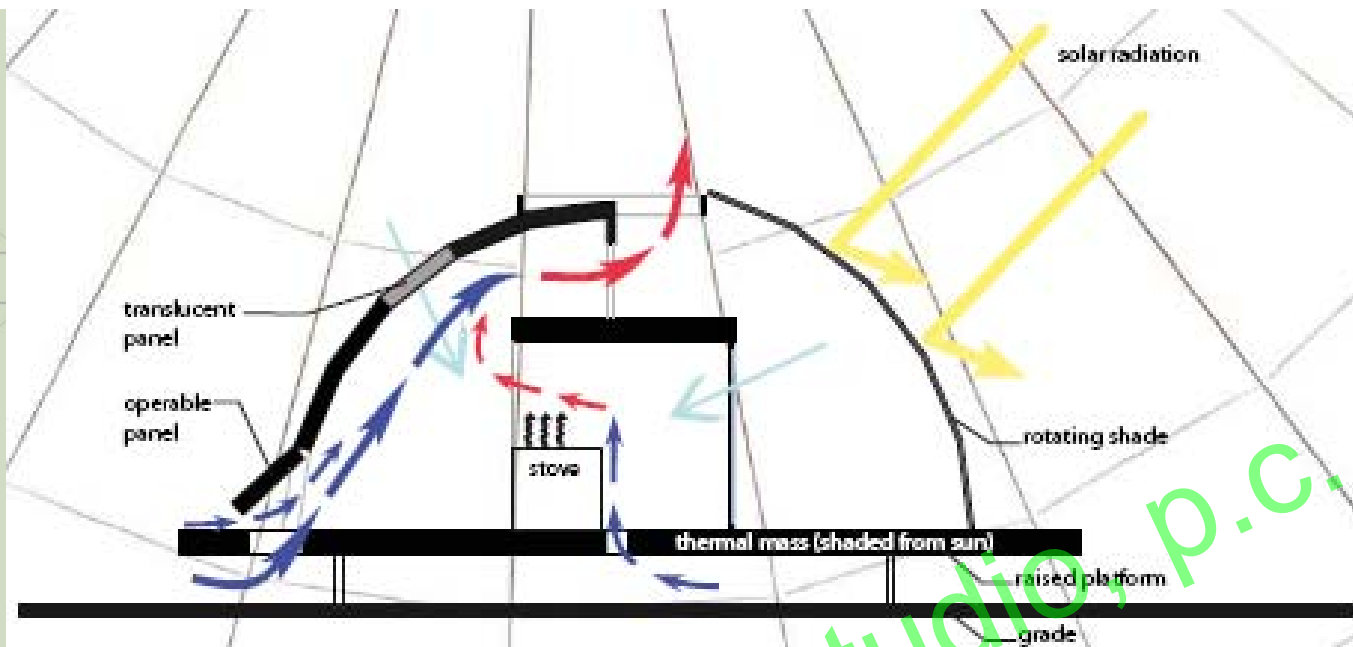
Plan of Window Fins: Diagonally oriented window fins help to bounce light into the space on the otherwise dirty (i.e. northwest) facade.

LIGHT SHELVES AND SHADES

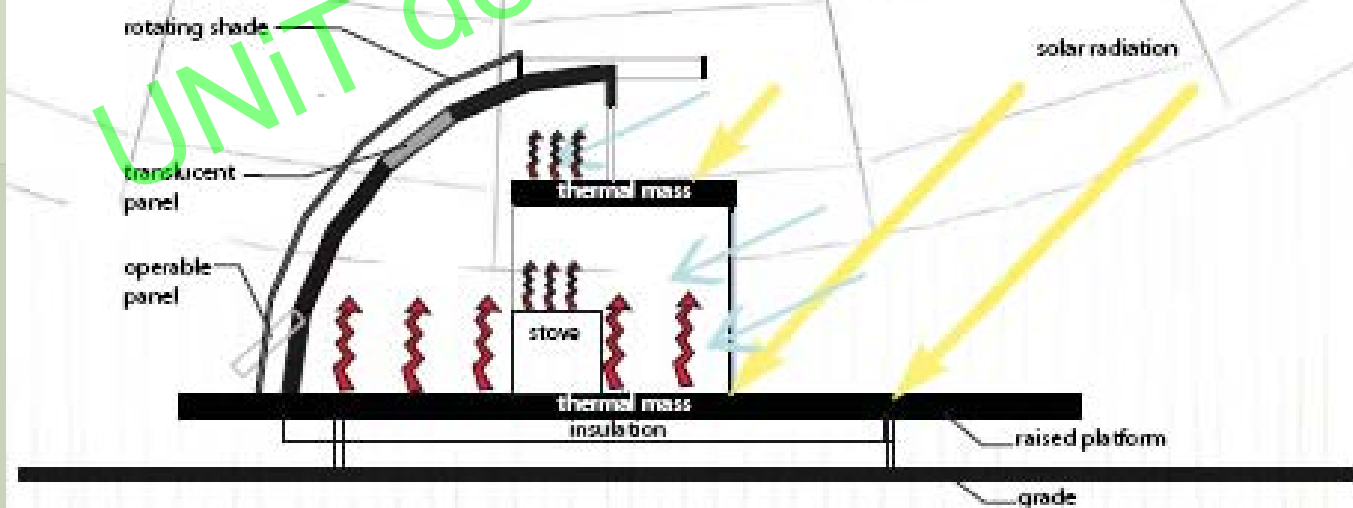
UNiT design studio, p.c.



BUILDING SYSTEMS

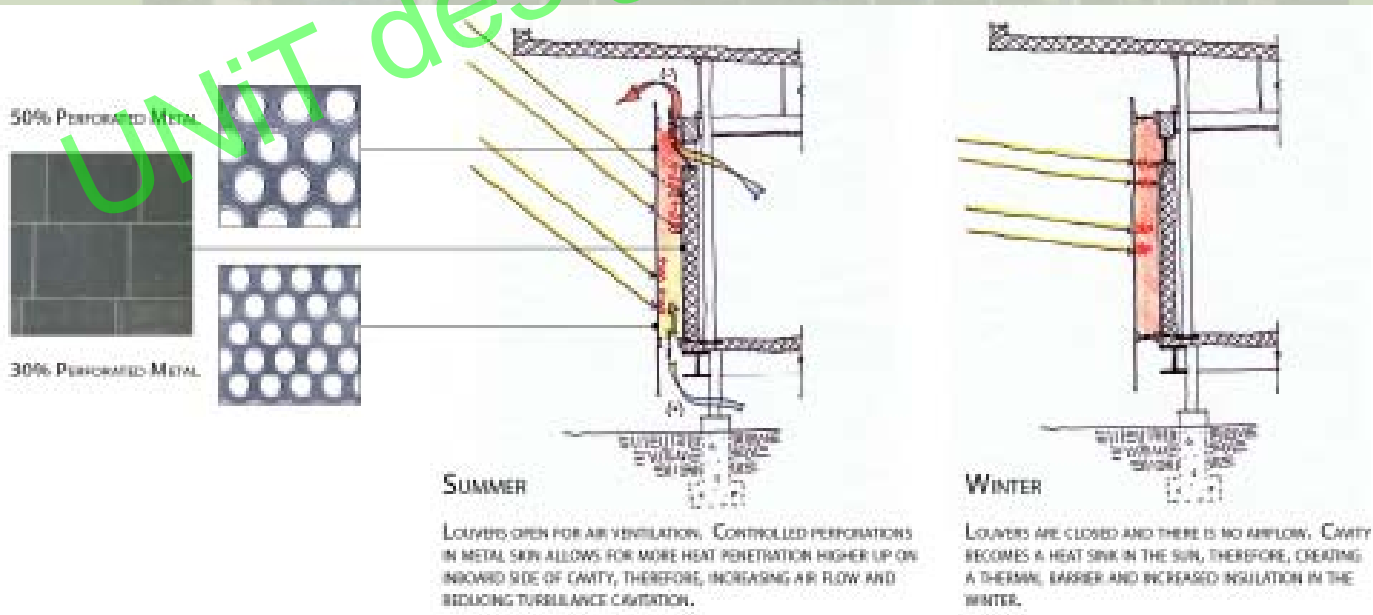
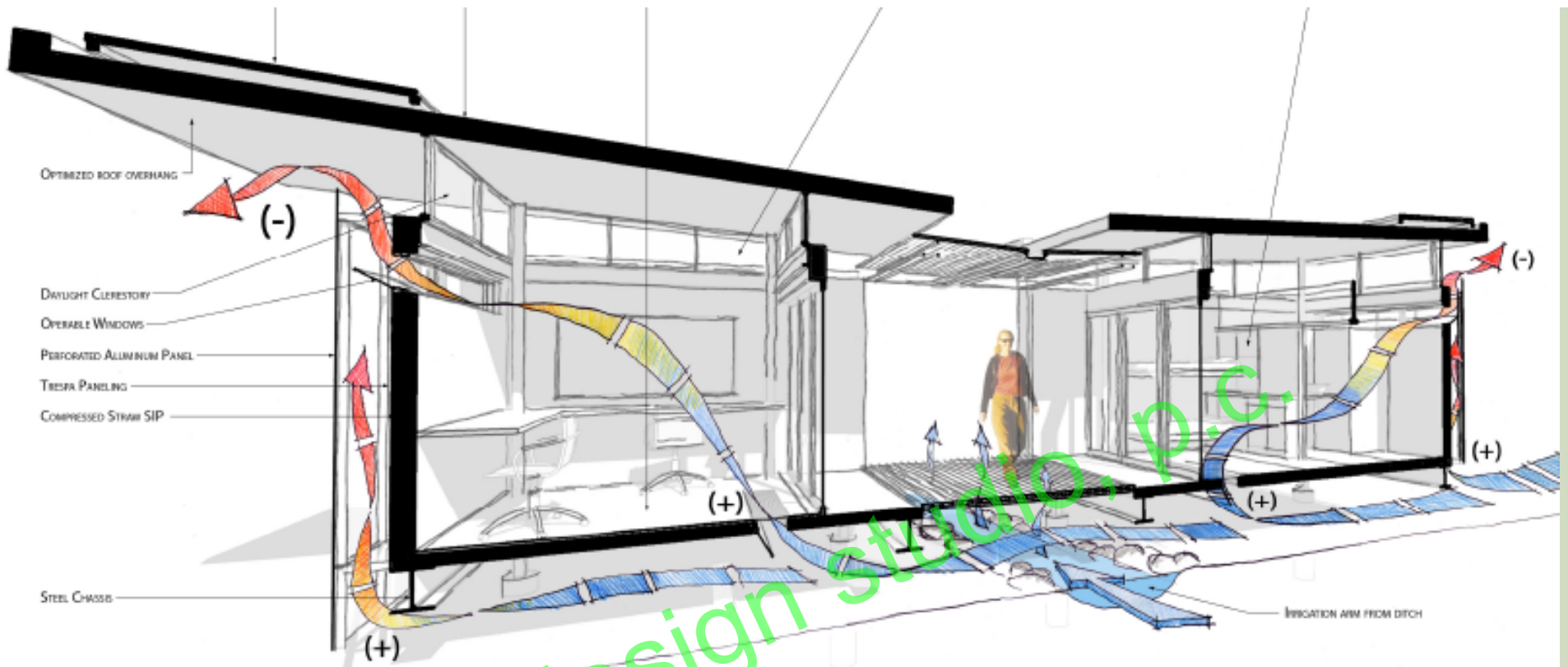


SUMMER COOLING



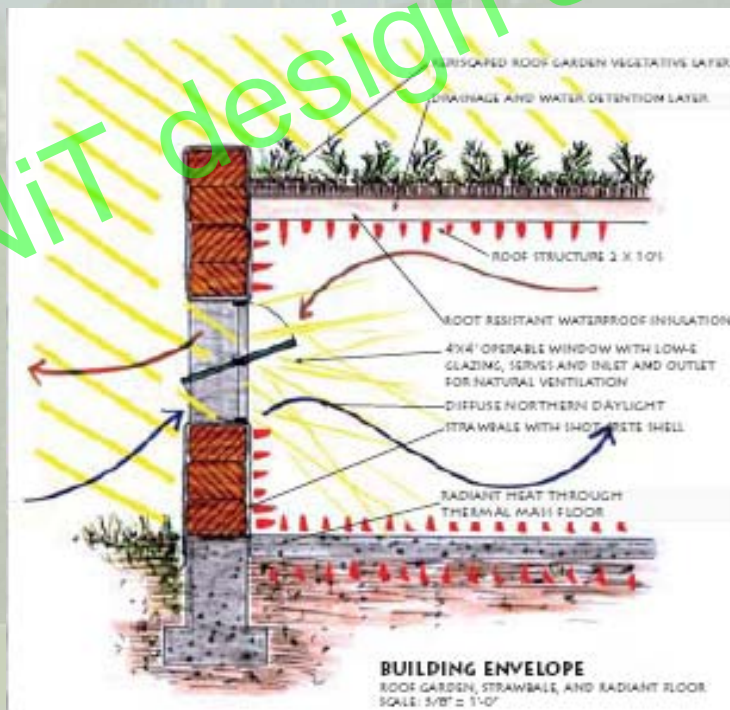
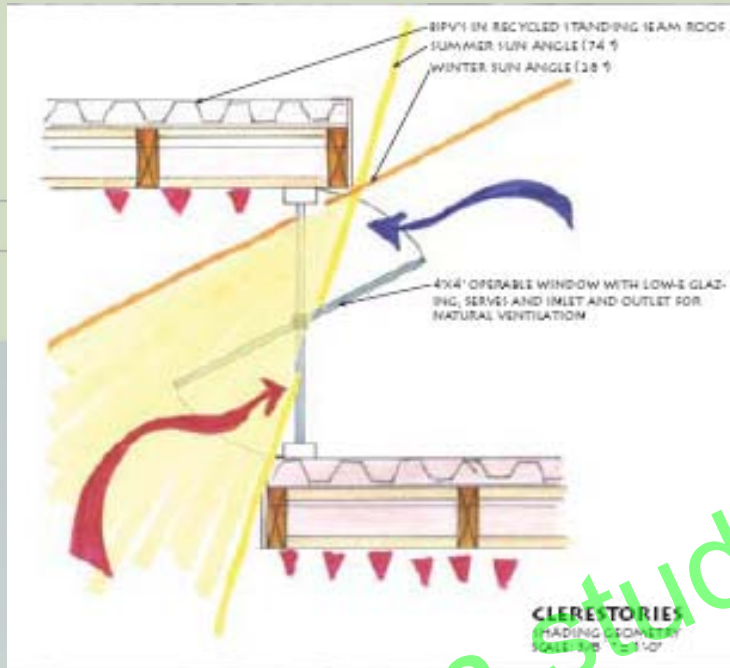
WINTER HEATING

UNiIT design studio, p.c.

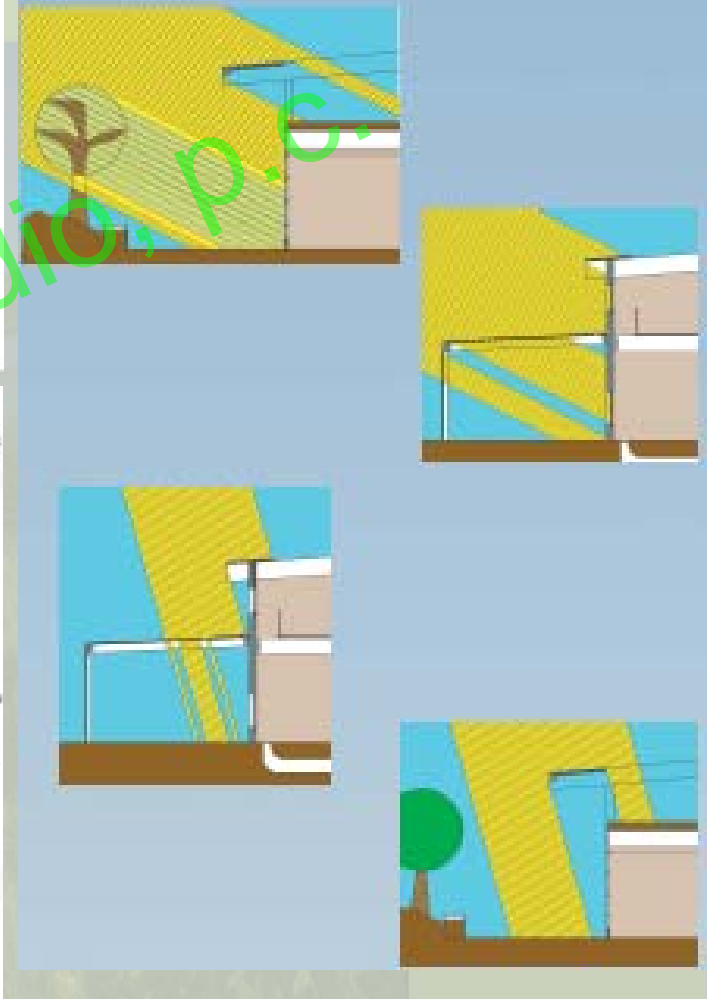


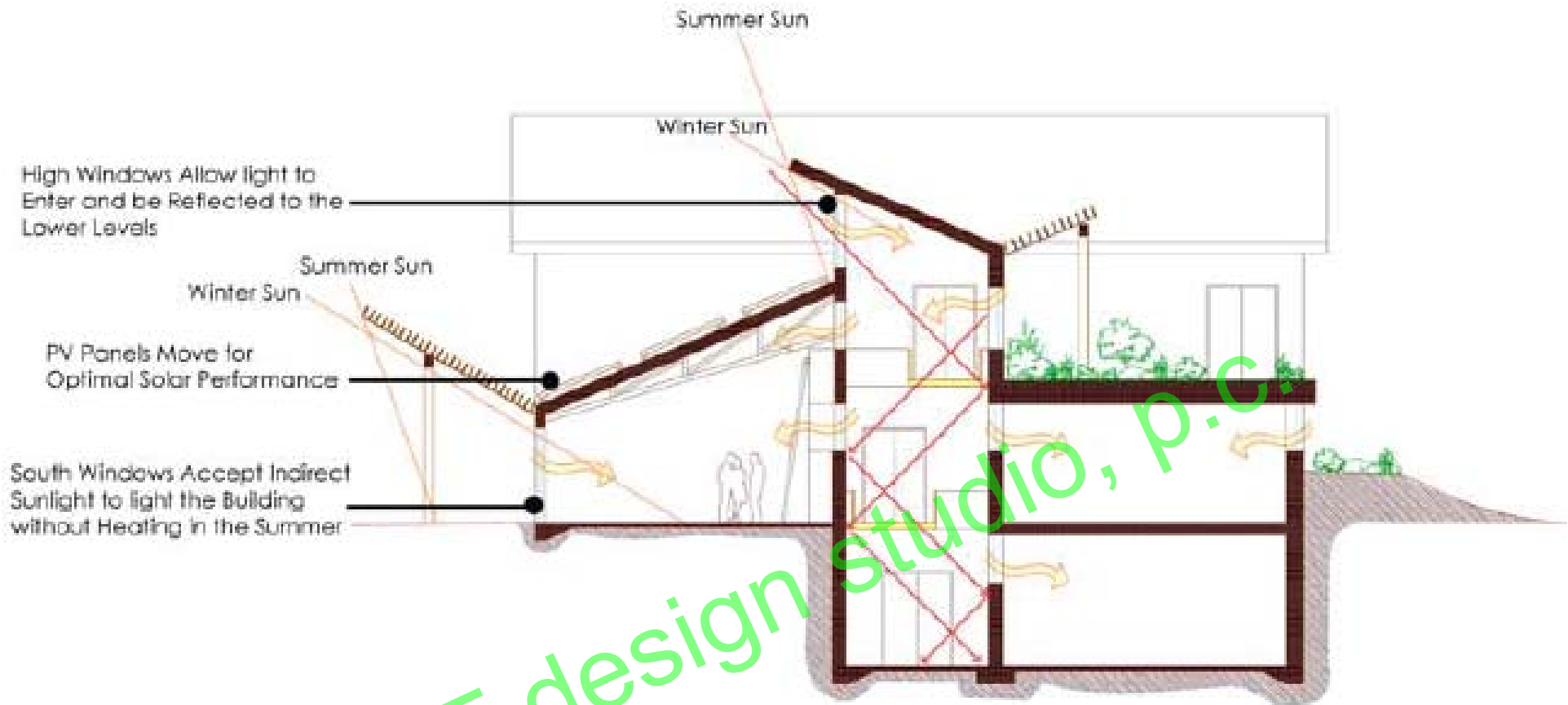
SOUTH SOLAR WALL

DOUBLE IBEIN AND PV FILM
SCALE: 1/4" = 1'-0"



DAYLIGHTING DIAGRAMS



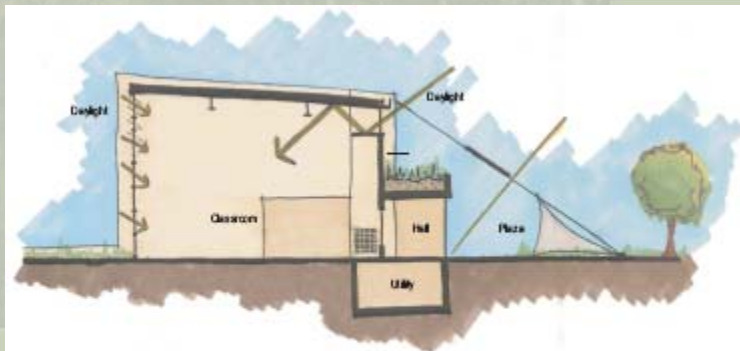


Day Lighting System

Scale : 1" = 1/16"



(A) Section at Cooling Tower
1/8" = 1/4"



(B) Section at Classroom
1/8" = 1/4"