



## **DHA - Scattered Sites Physical Needs Assessment**

*Green Historic Preservation*

*Denver, Colorado*

*2007*

3840 York Street, Suite 216  
Denver, Colorado 80205  
303.296.6200



## DHA Scattered Sites Physical Needs Assessment Assessment *Historic Preservation*

The UNiT design team, together with Wayne Taunton of The Denver Housing Authority, visited and evaluated 20 scattered structures included within the scope of the Physical Needs Assessment. Detailed photographs as well as written documentation were collected and compiled for each property. The properties were in a variety of conditions from newly remodeled to needing emergency repairs to the superstructure (shown to the left).

The Physical Needs Assessment is required for all rehabilitation and/or renovation applications for Single Family Development being presented for future funding. The report must address all existing conditions on the site, and must contain an analysis of the site in relation to all applicable building codes. It must state whether or not there are violations of the referenced building codes and if there are any conditions that might threaten the health and/or safety of current or future residents. Prior to undergoing the Physical Needs Assessment, the UNiT design team researched similar Assessments performed by other cities, including Atlanta and Boston, to encompass a complete list of assessment elements.



Urgent roof repairs performed once emergency building permits were issued



# UNIT



1129 10th Avenue



1305 Kalamath St.



1341 Kalamath St.



928 West 14th Avenue



700-704 Elati St.



708-710 Elati St.

3840 York Street, Suite 216  
Denver, Colorado 80205  
303.296.6200



1129 10th Avenue



1129 10th Avenue



1305 Kalamath St.



1305 Kalamath St.



928 West 14th Avenue



928 West 14th Avenue



# UNIT



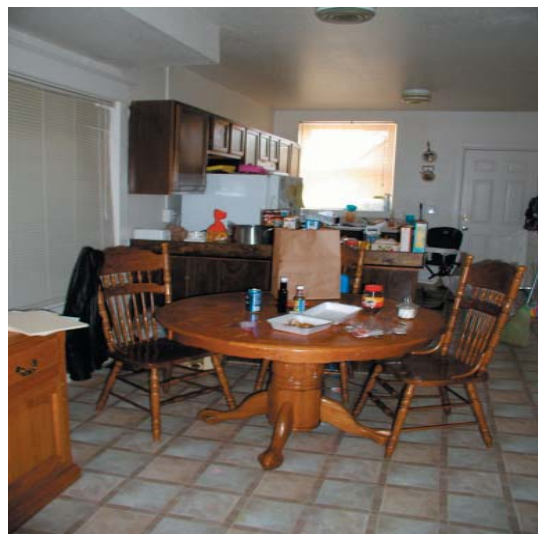
1341 Kalamath St.



1341 Kalamath St.



710 Elati St.



710 Elati St.



1135 10th Avenue



1135 10th Avenue

3840 York Street, Suite 216  
Denver, Colorado 80205  
303.296.6200