



North Elevation



Southwest Elevation

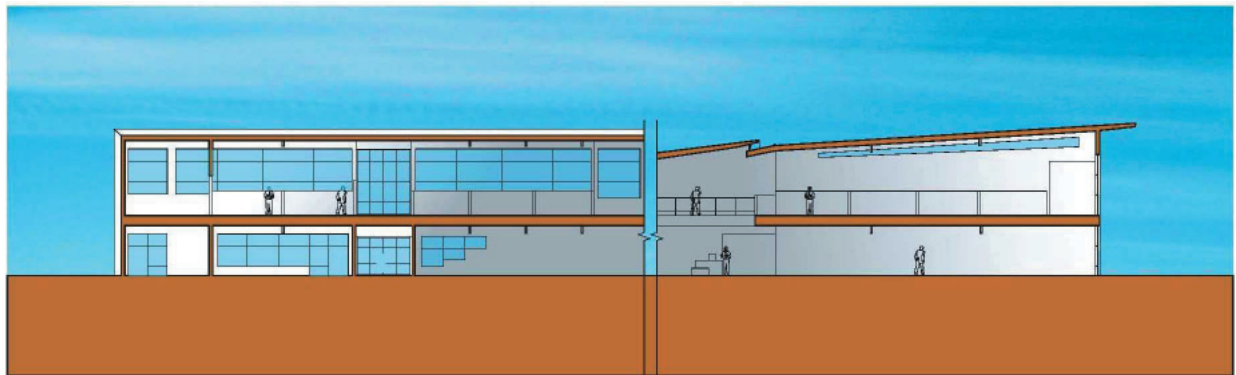
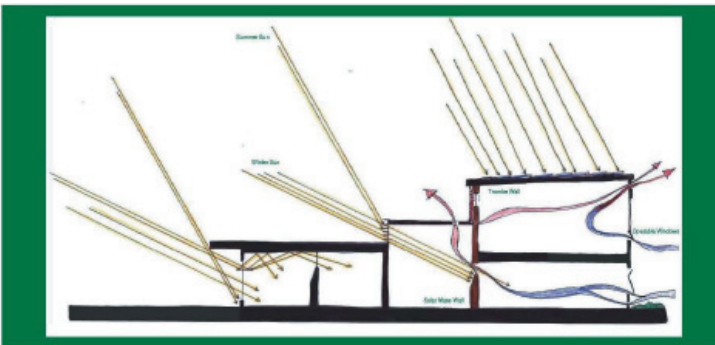


Southeast Elevation

Prairie Gateway Sustainable Youth Center
LEED Platinum
Commerce City, Colorado
2005



Site Plan
1" = 20' - 0"



Section A
1/8" = 1' - 0"

Prairie Gateway Sustainable Youth Center
LEED Platinum
Commerce City, Colorado

The Sustainable Youth Center located in the Rocky Mountain Arsenal in Commerce City is a joint venture between the main clients, US Fish and Wildlife and the Audubon Society in partnership with Commerce City who is redeveloping the northern area of the Arsenal. The project will anchor the redevelopment of the newly established Commerce City Center and will serve both the USFW and Audubon Society's education and community outreach functions. The 30K square foot facility provides a combination of display, education, outreach and classroom functions for both tenants. The LEED Platinum building features cutting edge systems, skin design and passive approaches to achieve an 85% energy savings over other typical buildings. Systems include complete passive heating, cooling and lighting as well as digesters and bio swales for storm water, living machine and low water fixtures as well as a natural ventilation system. The project also features BIPV technology located on the southern shading devices. These strategies and technologies will show case the ideas of sustainable green development to the children served by this facility.